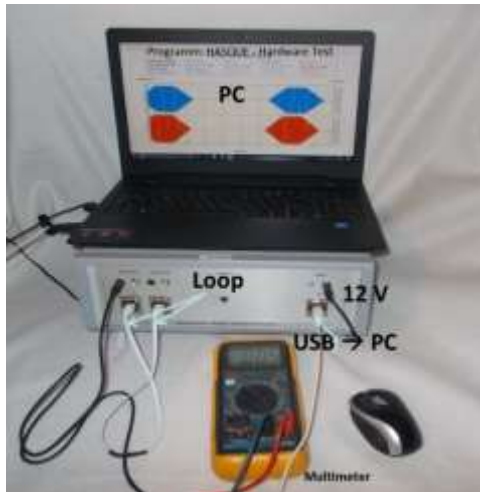


HASQUE

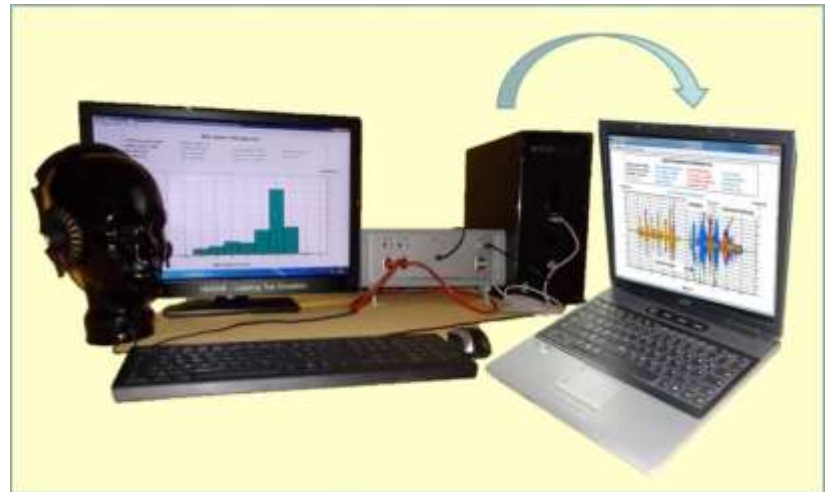
-Listening Test Simulator-

Software Upgrade

Version 11.2



Checking the HASQUE hardware for reliable measurements with Maintenance wizard



Trail – Software - 30 Day on any computer

Extensions:

- Maintenance Wizard
- Extensions of the help books
- Trail Software for 30 days
- Backward compatibility to Windows 7

About this upgrade:

The supplied HASQUE setup program for HASQUE measuring systems version 11.2 contains the extensions described in more detail below.

With this upgrade, the previous license key changes and must therefore be replaced after installation for purchased licenses. The new license keys will be made available by email against the reference number displayed in the program.

Maintenance Wizard

The Maintenance Wizard was developed to check the HASQUE hardware in order to limit the effort for extensive measurements, evaluations and the documentation required for them to a few keystrokes. After starting, the wizard provides the measurement results relevant to the quality of the HASQUE hardware in a results folder within one minute. Warnings are displayed when tolerance limits are exceeded.

Here is a little video about this extension: Maintenance Wizard Video.

Extension of the help bpkps

Four chapters explain how the HASQUE hardware can be checked reliably and how the error messages are to be interpreted. This means that it shows whether service is urgently required or whether a displayed deviation has no impact on the reliability of the measuring system and should only be corrected during the next maintenance.



Trail Software

The software has been expanded in such a way that an initial installation on a PC can be operated with all functions free of charge for 30 days without a license key.

Backward compatibility to windows 7

During the development of the HASQUE measuring system software version 11, special Windows functions for operating systems from W8 and up were replaced by our own W7-compatible functions in order to be able to operate this software upgrade on old, powerful measuring computers with the Windows 7 operating system. A software move is possible at any time if required.

How is a software upgrade carried out:

A software upgrade takes only a few minutes from download to completion and is performed as follows:

- Close all unnecessary programs.
- Download the relevant setupHASQUE...exe program to your computer

- Extract the program to your computer only and then run the setupHASQUE...exe program. The program can only be installed on the target computer by an administrator.
- Follow the onscreen instructions.
- After the installation, the program will open. With very old licenses, a wizard for installing drivers may open when the program starts. Please close this wizard without following the wizard's instructions.
- Please send us your registration number so that we can generate a new license key for you.

HASQUE version 11.2 is available after installation.

Remarks:

This software upgrade does not change any settings or project files and is implemented in the following products:

HASQUEw	– Offline- Hörtestsimulator
HASQUEKit	– Echtzeit- und Offline- Hörtestsimulator für individuelle Hardwaresysteme
HASQUEr	– Echtzeit- und Offline- Hörtestsimulator für HASQUE-Hardware
HASQUEr_P	– Erweiterter (HASQUE&PESQ) Echtzeit- und Offline- Hörtestsimulator für HASQUE-Hardware
HASQUEKit-PEI-AT	– Echtzeit- und Offline- Hörtestsimulator für individuelle Hardwaresysteme mit Steuerungsmöglichkeiten von Funkgeräten über die PEI